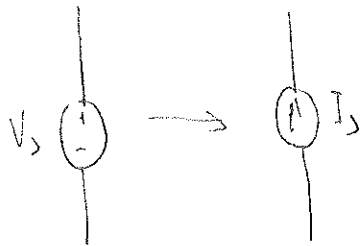


ECE 233 Homework-1  
Solution



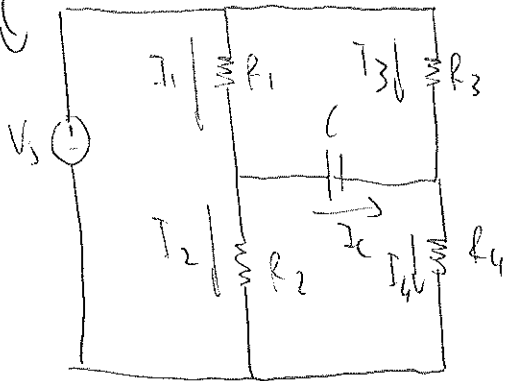
$$I_1, I_2, I_3, I_4 \rightarrow V_1, V_2, V_3, V_4$$

$$R_1, R_2, R_3, R_4 \rightarrow G_1, G_2, G_3, G_4$$

$$C \rightarrow L$$

$$I_c \rightarrow V_L$$

The circuit



$$I_1 = I_2 + I_c \rightarrow V_1 = V_2 + V_L$$

$$I_3 + I_c = I_4 \rightarrow V_3 + V_L = V_4$$

Hence the dual circuit is

